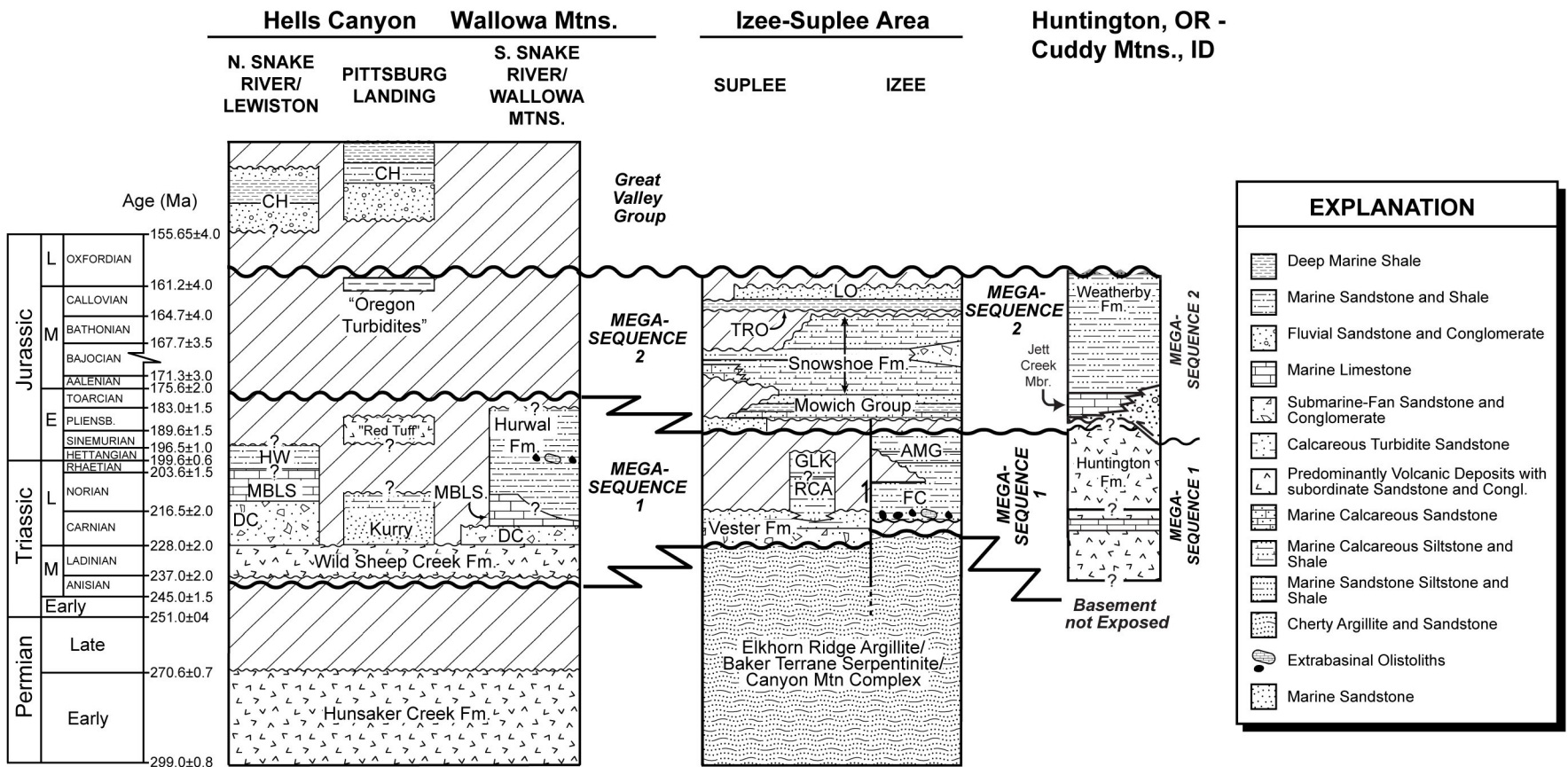


**Substrate Crust
(Pre MS-2)**

WALLOWA ARC

**OLDS FERRY ARC/
BAKER TERRANE**

OLDS FERRY ARC



Modified from LaMaskin et al. (2008), LaMaskin et al. (in revision; GSA Bulletin), LaMaskin et al., (2009), Tumpane (2010)

LaMaskin, T.A., Dorsey, R.J., and Vervoort, J.D., 2008, Tectonic controls on mudrock geochemistry, Mesozoic rocks of eastern Oregon and Western Idaho, U.S.A.: Implications for Cordilleran tectonics: *Journal of Sedimentary Research*, v. 78, p. 787-805, doi: 10.2110/jsr.2008.087.

LaMaskin, T.A., Vervoort, J.D., and Dorsey, R.J., In Revision, Early Mesozoic paleogeography and tectonic evolution of the western United States: Insights from detrital zircon U-Pb geochronology of the Blue Mountains Province, northeastern Oregon, U.S.A.: *Geological Society of America Bulletin*.

LaMaskin, T.A., Dorsey, R.J., and Vervoort, J.V., 2009, Initiation of the Cretaceous, Andean-type margin of the western U.S. Cordillera: insights from detrital-zircon ages of the Coon Hollow Formation, Idaho, U.S.A. (abstr.): *Geological Society of America Abstracts with Programs*, Vol. 41, No. 7, p. 183.

Tumpane, K.P., 2010, Age and isotopic investigations of the Olds Ferry terrane and its relations to other terranes of the Blue Mountains Province, eastern Oregon and west-central Idaho: [M.S. Thesis], Boise State University, Boise, Idaho., 201 p.

Copyright 2010 LaMaskin, T.A., Dorsey, R.J., and Vervoort, J.D.
This figure is undergoing revisions by the authors listed above. Do not publish, copy or use without express written consent.